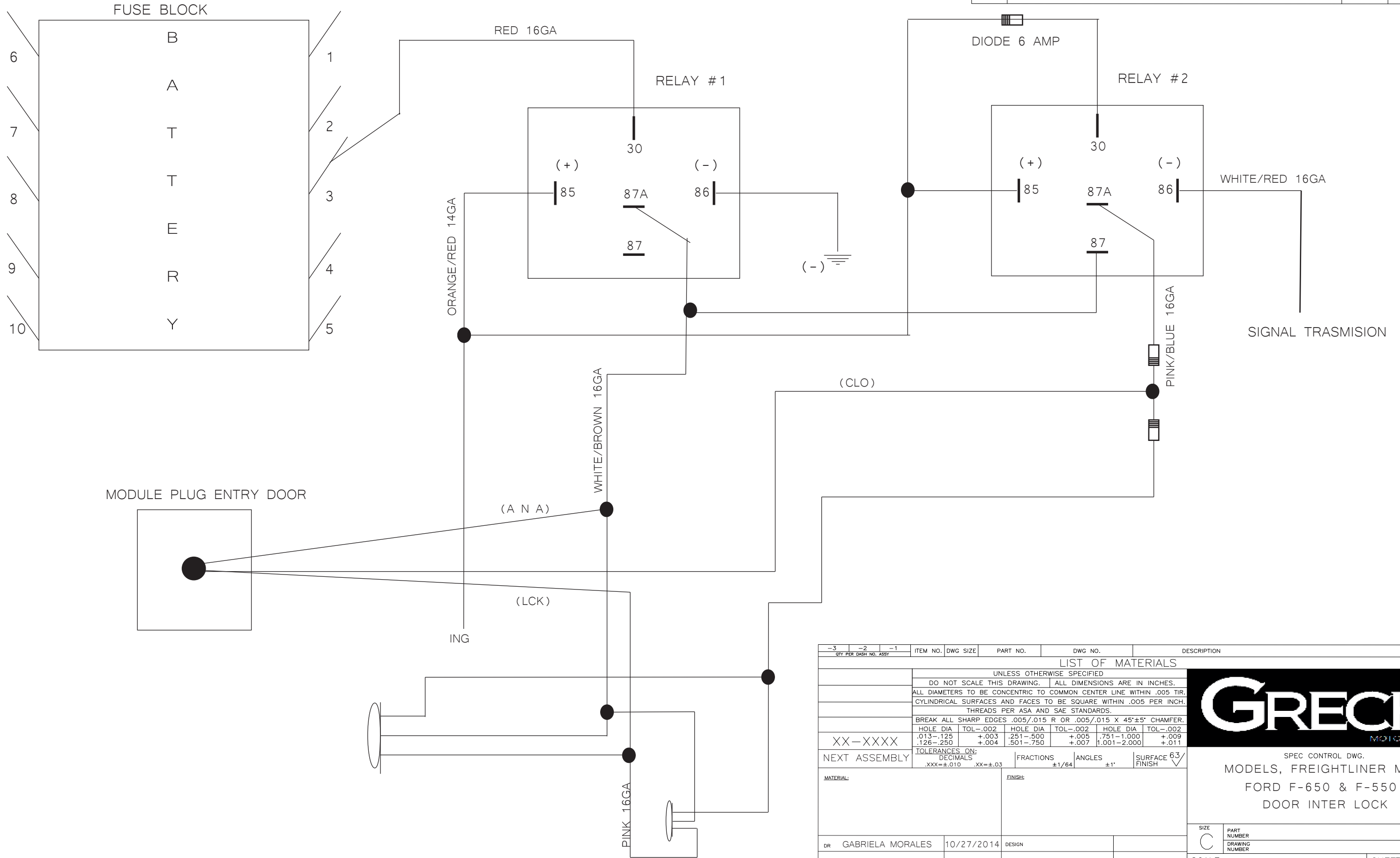


THE INFORMATION DISCLOSED ON THIS DRAWING IS PROPRIETARY. IT IS ISSUED FOR ENGINEERING USE ONLY AND MAY NOT BE REPRODUCED OR DISCLOSED, IN WHOLE OR IN PART, TO ANYONE WITHOUT THE DIRECT WRITTEN PERMISSION OF GRECH MOTORS LLC  
 PARTS OR TOOLS MANUFACTURED TO MEET THE REQUIREMENTS OF THIS DRAWING MAY NOT BE USED BY OR SOLD TO ANYONE WITHOUT THE DIRECT WRITTEN PERMISSION OF GRECH MOTORS LLC.

REVISIONS			
REV	DESCRIPTION	DATE	APPD



-3	-2	-1	ITEM NO.	DWG SIZE	PART NO.	DWG NO.	DESCRIPTION	NOTES
QTY PER DASH NO.	ASSY							
<b>LIST OF MATERIALS</b>								
UNLESS OTHERWISE SPECIFIED								
DO NOT SCALE THIS DRAWING. ALL DIMENSIONS ARE IN INCHES.								
ALL DIAMETERS TO BE CONCENTRIC TO COMMON CENTER LINE WITHIN .005 TIR.								
CYLINDRICAL SURFACES AND FACES TO BE SQUARE WITHIN .005 PER INCH.								
THREADS PER ASA AND SAE STANDARDS.								
BREAK ALL SHARP EDGES .005/.015 R OR .005/.015 X 45°±5° CHAMFER.								
HOLE DIA	TOL	HOLE DIA	TOL	HOLE DIA	TOL	HOLE DIA	TOL	
.013-.125	+0.003	.251-.500	+0.005	.751-1.000	+0.009			
.126-.250	+0.004	.501-.750	+0.007	1.001-2.000	+0.011			
TOLERANCES ON:								
DECIMALS			FRACTIONS	ANGLES	SURFACE FINISH			
.XXX=±.010			.XX=±.03	±1/64	±1°		63/√	
MATERIAL:				FINISH:				
DR GABRIELA MORALES				10/27/2014				
CHK				APPD				
SIZE C		PART NUMBER		DRAWING NUMBER			REVISION N/C	
SCALE:							SHEET 1 OF 1	



SPEC CONTROL DWG.  
 MODELS, FREIGHTLINER M2,  
 FORD F-650 & F-550  
 DOOR INTER LOCK